

THE ENCLAVE HOTEL & SUITES

ACCESSIBILITY STATS



The Enclave Hotel & Suites

6165 Carrier Drive
Orlando, Florida
32819

Tel: (407) 351 1155
Fax: (407) 351 2001
reservations@staySky.com

CAR PARK(ING)

- NO obstacles are present to impede 100% accessibility by guests with mobility or visual difficulties.
- Car Park consists of a flat, evenly paved surface and surrounds resort allowing close and easy access to reception, guestrooms & resort facilities.
- Located directly in front of the reception building, two parking bays are designated, signed and painted for handicap parking only.



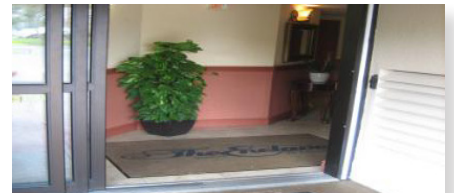
HOTEL ENTRANCE & GROUNDS

- Main entrance and overall hotel ground of hotel is flat, consistent and even to that of the car park.
- Entrance has manual opening door doors with a 36 1/8 inch width allowing access for wheelchairs.
- Main entrance to hotel is flat, consistent and even to that of the car park and main entrance, converting from pavement to that of smooth and even surface progressing into that of tile flooring.



RECEPTION AREA

- Main reception area is consistently flat; tile and carpet. Spacious area, allowing easy movement of a wheelchair or the visual impaired.
- Each building. Housing guestrooms has a electronic door with a 69" width allowing easy access to wheelchair bound guests.



LIFTS

- Lifts easily accommodate wheelchairs and their accessibility.
- 41 inches - Lift Door Entrance Width:
- 80 inches - Elevator Width (Interior of Lift Cab)
- 54 inches - Elevator Depth (Interior of Lift Cab)
- Controls for lift are positioned for easy accessible by wheelchair bound guests.
- Lifts serve all guestroom floors
- Braille markings are present on the exterior and interior of the lift



PUBLIC FACILITIES (Restrooms – Toilets)

- Hotel has public restrooms located adjacent to the hotels reception area, indoor pool and fitness room.
- A designated handicap accessible toilet is available inside the gender specific restrooms; one in women's, and one in gents – one specific stall for each room
- 36 inches – Width of main entrance door to each gender specific rest-room
- 36 inches – Width of entrance door to accessible stall. Wheel chair has access to the front of the toilet allowing maneuvering availability. Sink basin area has a height of 34" and counter allows from wheelchair to access easily.



THE ENCLAVE SUITES ACCESSIBILITY STATS

ACCESSIBLE STUDIO General Information

- Hotel has a total of One Studio Suite adapted for guests with disabilities.
- 1 – Suites are certified as “Adapted for the Disabled” with a bath/shower combo
- 0 – Suites are certified as “Adapted for the Disabled” with a roll-in shower
- These suites are recommended to be booked in advance and will be confirmed based upon availability at time of request and prior to guest arrival.
- Hotel has roll-away beds available, for a local fee and subject to availability.



BATH/SHOWER COMBO ACCESSIBLE SUITE

- Suite is considered as a studio, handicap accessible – bath/shower combo only.
- Studio is located on the Ground Floor, Building 1 – Room 1111
- 6 inches - Beds/Mattress are situated above ground on a solid metal frame
- 36 inches – Entrance Door Width and Bedroom Door Width
- 26 inches – Height of bed from ground to top of mattress

SUITE BATHROOM

- 36 inches – Width of Bathroom Entrance Door from Bedroom
- 15 ¼ inches – Toilet Height from floor to top of seat
- 13 ¾ inches – Bath Tub Height from floor to top of tub
- 31 inches – Sink Height from floor to top of sink surround
- NO – Wheelchair cannot access side of toilet
- YES – Wheelchair can fit under sink (32")
- YES – Wheelchair can access side of bath tub and front of toilet
- YES – Wheelchair can access bathroom and maneuver – with assistance.
- YES – Grab rails are present alongside the bath
- YES – Grab rails are not present alongside the toilet
- NO & YES – Bath seat are not a fixture of the bath. However, seats are available upon request and availability. Local fee may apply if required to order from outside company

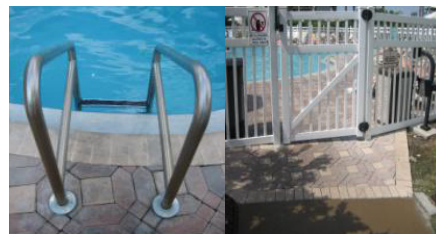
STANDARD SUITE

- Deluxe Studios are located on ground up, ten (10) floors.
- 36 inches – Width of entrance to suite
- 36 inches – Width of bathroom door
- YES - Hotel has suites located on the ground floor
- Ground floor suites are consider as run of house, deluxe suites – ground floor – a request can be made, no guarantee of room assignment until arrival
- 6 inches - Beds/Mattress are situated above ground on a solid metal frame
- YES – All suites have refrigerators



SWIMMING POOL

- Swimming pool is accessible through gate, flat, paved surface.
- YES – Pool access has either shallow steps with railing or ladder with grab rails
- No – Pool does not have a hoist to accommodate disabled guests
- YES – Pool area is easy accessible to guests with disabilities



BREAKFAST & BAR AREA

- Breakfast and bar area is easy accessible via a flat tile or carpeted surface



THE ENCLAVE SUITES ACCESSIBILITY STATS

FIRE SAFETY

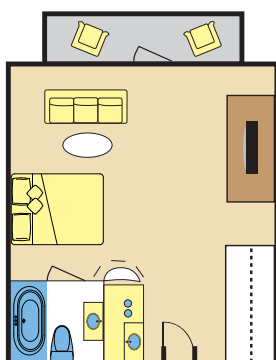
- Hotel staffs are trained in evacuation procedures for guests with disabilities.
- Hotel has one wheelchair on site.

FACILITIES & STAFF ASSISTANCE FOR DEAF & BLIND

- Hotel staffs are trained on disability awareness.
- YES – Hotels has TDD machines, emergency lighting, Braille, suite door bells and flashers.

GENERAL SUITE LAYOUT:

Studio



2 Bedroom, 2 Bathroom

