

LAKE BUENA VISTA RESORT VILLAGE & SPA

ACCESSIBILITY STATS



Lake Buena Vista Resort Village & Spa

8113 Resort Village Dr.
Orlando, Florida
32821

Tel: (407) 597-0214

Fax: (407) 597-600

reservations@staySky.com

CAR PARK(ING)

- NO obstacles are present to impede 100% accessibility by guests with mobility or visual difficulties.
- Car Park consists of a flat, evenly paved surface and surrounds resort allowing close and easy access to reception, guestrooms & resort facilities.
- Located directly in front of the reception building, four parking bays, one on each side of the reception building are designated, signed and painted for handicap parking only.
- Each building housing guestrooms also have two plus dedicated parking stalls.



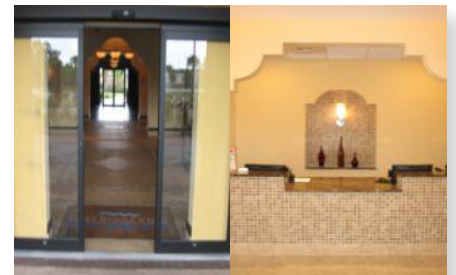
HOTEL ENTRANCE & GROUNDS

- Main entrance and overall hotel ground of hotel is flat, consistent and even to that of the carpark.
- Entrance has manual opening door doors with a 69 inch width allowing access for wheelchairs and guests.
- Main entrance to hotel is flat, consistent and even to that of the car park and main entrance, converting from pavement to that of smooth and even surface progressing into that of tile flooring.



RECEPTION AREA

- Main entrance and overall hotel ground of hotel is flat, consistent and even to that of the carpark.
- Entrance has manual opening door doors with a 69 inch width allowing access for wheelchairs and guests.
- Main entrance to hotel is flat, consistent and even to that of the car park and main entrance, converting from pavement to that of smooth and even surface progressing into that of tile flooring.



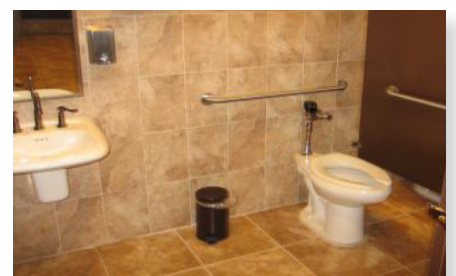
LIFTS

- Main entrance and overall hotel ground of hotel is flat, consistent and even to that of the carpark.
- Entrance has manual opening door doors with a 69 inch width allowing access for wheelchairs and guests.
- Main entrance to hotel is flat, consistent and even to that of the car park and main entrance, converting from pavement to that of smooth and even surface progressing into that of tile flooring.



PUBLIC FACILITIES (Restrooms – Toilets)

- Hotel has public restrooms located adjacent to the hotels reception area, indoor pool and fitness room.
- A designated handicap accessible toilet is available inside the gender specific restrooms; one in women, and one in gents – one specific stall for each room
- 34 inches – Width of main entrance door to each gender specific restrooms
- 34 inches – Width of entrance door to accessible stall. Wheelchair has access to side of toilet with a 44" area between toilet and sink. Sink basin area has a height of 34" and counter allows from wheelchair to access easily.



LAKE BUENA VISTA RESORT VILLAGE & SPA ACCESSIBILITY STATS

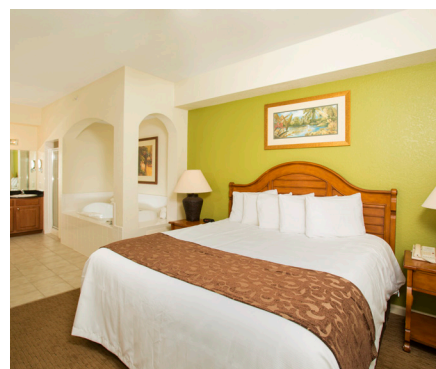
ACCESSIBLE SUITE General Information

- Hotel has a total of 34 apartments adapted for guests with disabilities in which 8 are adapted for the disabled and 24 are fully adapted with roll-in showers.
- Disabled accessible guestrooms – master bedroom only
 - 6 – 2 Bedroom Apartments
 - 2 – 3 Bedroom Apartments
- Fully Adapted guestrooms with Roll in showers in master bedroom only
 - 10 – 2 Bedroom Apartments
 - 12 – 3 Bedroom Apartments
 - 2 – 4 Bedroom Apartments
- These apartments are recommended to be booked in advance and will be confirmed based upon availability at time of request and prior to guest arrival.
- Hotel has roll-away beds available, for a local fee and subject to availability.



BATH/SHOWER COMBO ACCESSIBLE APT

- Apartment is considered as a handicap accessible – separate bath, separate shower – master en-suite bathroom. Room Location, Bedding Type & Number:
- 2 Bedroom Apartments
 - Building 1, third floor – Rooms 1303, 1304, 1310
 - Building 2, ground floor – Rooms 2103, 2104, 2110
- 3 Bedroom Apartments
 - Building 1, sixth floor – 1602 & Building 2, sixth floor 2602
- 8 inches - Beds/Mattress are situated above ground on a solid metal frame
- 32 inches – Entrance Door Width and Bedroom Door Width
- 26 inches – Height of bed from ground to top of mattress



APARTMENT BATHROOM

- Bathroom is open to that of the sleeping area – en suite to master bedroom
- 50 inches–Width of Bathroom Entrance Door from Bedroom, Bath Tub & Shower
- 17 inches – Toilet Height from floor to top of seat
- 27 inches – Bath Tub Height from floor to top of tub
- 34 inches – Sink Height from floor to top of sink surround
- NO – Wheelchair cannot access side of toilet or fit under sink
- YES – Wheelchair can access side of bath tub, front of toilet and shower
- YES – Wheelchairs can access bathroom and maneuver – with assistance.
- NO – Grab rails are present alongside the bath. YES – grab rails are present in shower.
- YES – Grab rails are present alongside the toilet at 33" from ground.
- NO & YES – Bath seat are not a fixture of the bath. However, seats are available upon request and subject to availability.



ROLL-IN SHOWER ACCESSIBLE APT

- Apartment is considered as a fully handicap accessible – roll-in shower – master bedroom en suite bathroom. Apartments, Location and Bed Type:
- 2 Bedroom Apartments
 - Building 1, third floor – 1311
 - Building 3, 5th floor – 3508, sixth floor – 3608, tenth floor 31008
 - Building 4, third floor – 4305
 - Building 5, 5th floor 5506, 6th floor 5606, 10th floor 51006, 14th floor 51406
- 3 Bedroom Apartments
 - Building 1, third floor – 1302
 - Building 2, ground floor - 2102 & 2109
 - Building 3, eighth floor – 3814, twelfth floor – 31214
 - Building 5, 3rd floor 5301, 4th floor 5401, 8th floor 5801, 12th floor 51201, 15th floor 51501
- 8 inches - Beds/Mattress are situated above ground on a solid metal frame
- 34 inches – Entrance Door Width and Bedroom Door Width
- 26 inches – Height of bed from ground to top of mattress



LAKE BUENA VISTA RESORT VILLAGE & SPA ACCESSIBILITY STATS

- 50 inches - Width of Bathroom Entrance Door from Master Bedroom
- 34 inches – Width of Bathroom Entrance Door to Toilet

APARTMENT BATHROOM

- 17 inches – Toilet Height from floor to top of seat
- 46 inches – Shower control height
- 34 inches – Sink Height from floor to top of sink surround
- YES – Wheelchair can access front of toilet & fit under sink
- YES – Wheelchairs can access bathroom with full and easy maneuverability
- YES – Grab rails are present alongside the toilet (33") and shower bench is permanent



FULLY ADAPTED KITCHEN

- 34 inches – Height from floor to counter top – kitchen sink
- 35 inches – Height from floor to stove top – 4 rings
- 34 inches – Height from floor to counter top – microwave oven access
- 52" inches – Width for access from living area, hallway to kitchen – carpet to tile
- YES – All apartments have refrigerators



STANDARD APT

- Apartments are located on ground to fourteenth floor
- 34 inches – Width of entrance to apartment
- 34 inches – Width of bathroom door – in all standard bathroom (not master)
- YES - Hotel has standard apartment located on the ground floor
- Ground floor apartments are consider as run of house – ground floor
- YES – All apartments have refrigerators

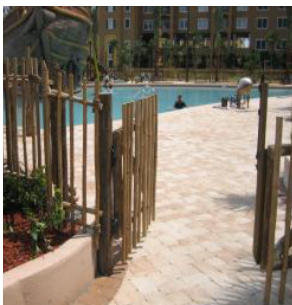


SWIMMING POOL

- Two Swimming pools are accessible through gate, flat, paved surface.
- YES – Pool access has either shallow zero entry or steps with railing or ladder with grab rails
- No – Pool does not have a hoist to accommodate disabled guests
- YES – Jacuzzi at main pool has a hoist to accommodate disabled guests
- YES – Pool area is easy accessible to guests with disabilities



AQUATIC CENTER – MAIN RESORT POOL



Entrance



Zero Entry
Access



Zero Entry –
towards main
area



Stairs to
depend



Lift for Jacuzzi
access

LAKE BUENA VISTA RESORT VILLAGE & SPA ACCESSIBILITY STATS

RESTAURANT & BAR

- Breakfast and bar area is easy accessible via a flat tile or carpeted surface



FIRE SAFETY

- Hotel staffs are trained in evacuation procedures for guests with disabilities.
- Hotel has no wheelchair on site. Wheelchairs can be arranged by guests through an outside company who will deliver and pick up from hotel – local fee.

FACILITIES & STAFF ASSISTANCE FOR DEAF & BLIND

- Hotel staffs are trained on disability awareness.
- YES – Hotels has TDD machines, emergency lighting, Braille, suite door bells and flashers.

GENERAL SUITE LAYOUT:

2 Bedroom, 2 Bathroom



3 Bedroom, 2 Bathroom

